

GRAVURE
SECTION

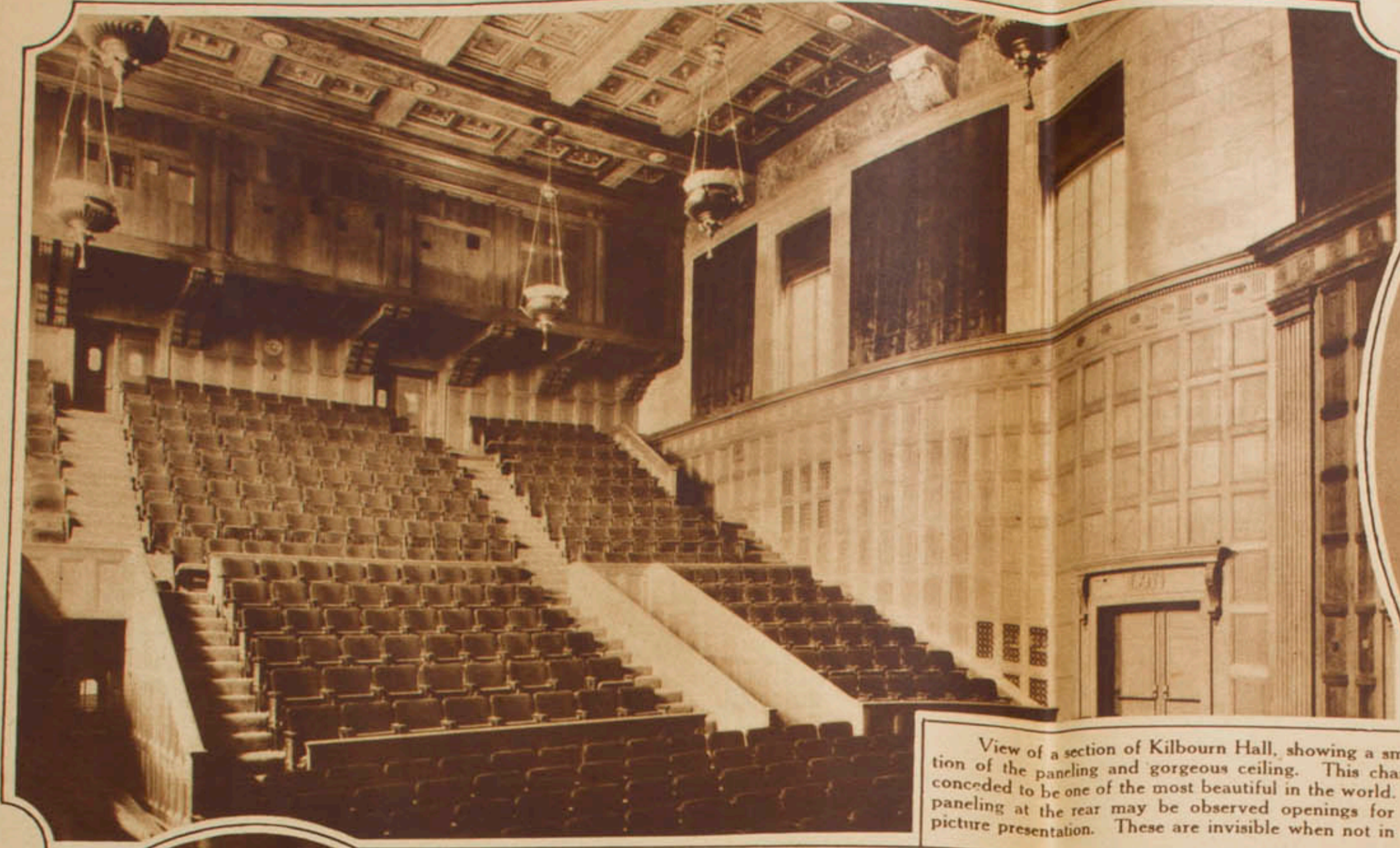
Democrat  Chronicle.

GRAVURE
SECTION

SUNDAY, SEPTEMBER 10, 1922.



• GEORGE EASTMAN •



View of a section of Kilbourn Hall, showing a small section of the paneling and gorgeous ceiling. This chamber is conceded to be one of the most beautiful in the world. In the paneling at the rear may be observed openings for motion picture presentation. These are invisible when not in use.



Dr. Rush Rhees, president of the University of Rochester.

Eastman Theater and Eastman School of Music.

The Gift and Its Purpose.

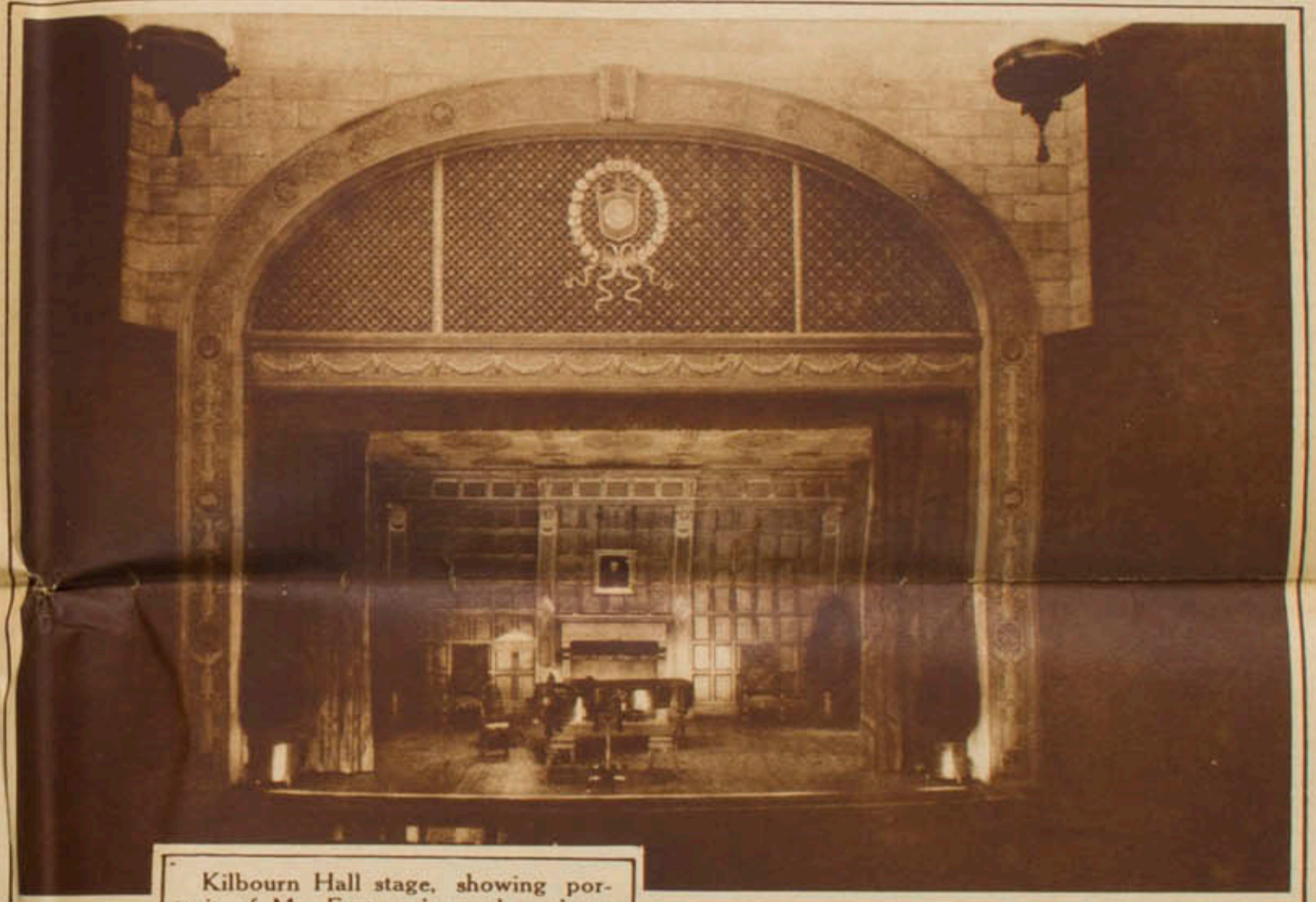
George Eastman's gift of a school of music and theater to the people of Rochester, for the purpose of developing musical talent and musical appreciation, was announced on August 5, 1919. The Eastman School of Music was opened on September 19, 1921, and the Eastman Theater on September 4, 1922.

Mr. Eastman's original gift amounted to \$3,520,000, divided as follows: Site, \$381,000; building and equipment, \$1,000,000; endowment of school of music, \$2,139,000. A few months later he added \$1,000,000 for building and equipment.

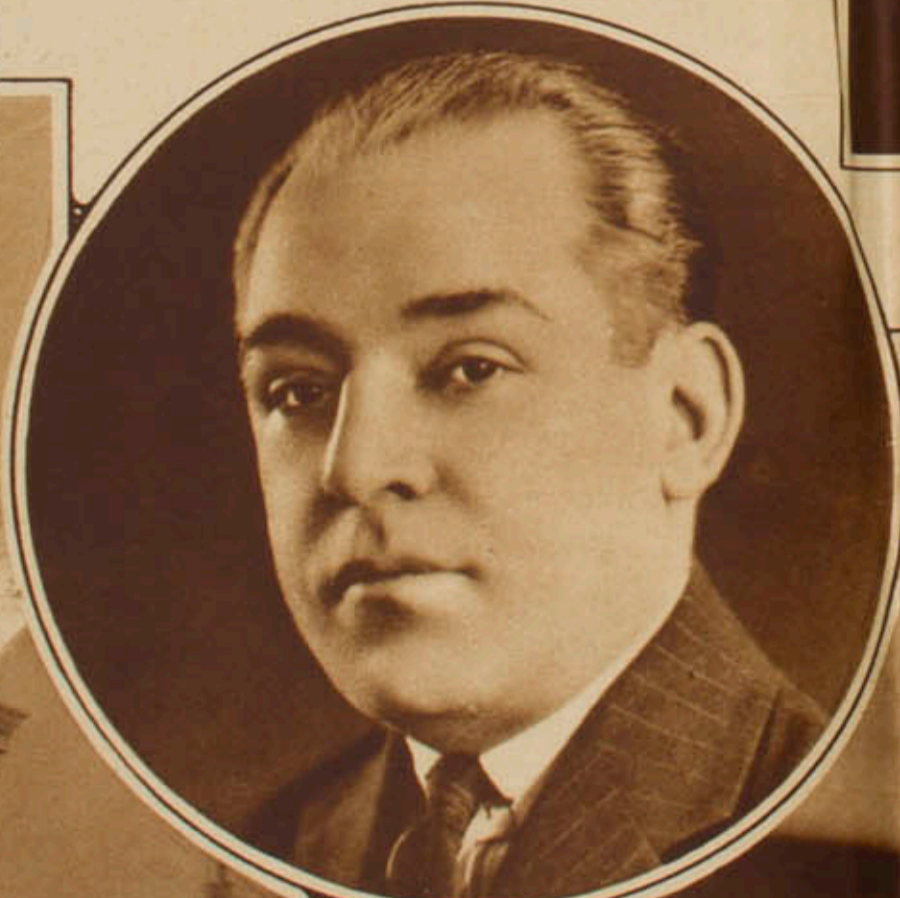
By the terms of the gift the theater and school of music are the property of the University of Rochester, to be maintained and operated by a separate Board of Trustees for the promotion of musical interests generally. All profits from the operation of the theater will be put back into the enterprise.



Alf Klingenberg, director of the Eastman School of Music.



Kilbourn Hall stage, showing portrait of Mr. Eastman's mother above the mantel. Kilbourn Hall is named in her memory.



Charles H. Goulding, managing director of the Eastman Theater.



Arthur Alexander, general music director of the Eastman Theater.

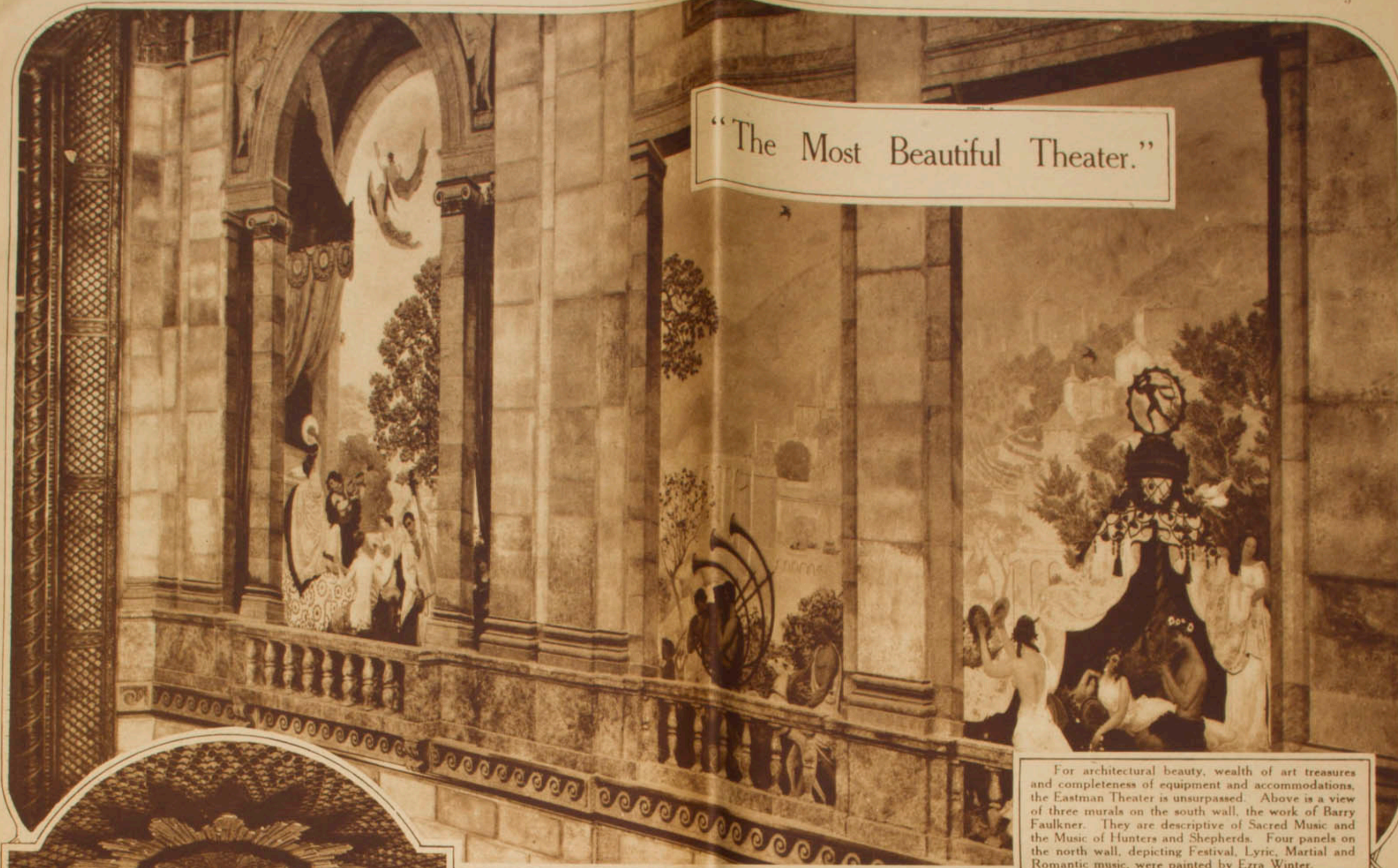


Box office of Kilbourn Hall, indicative of the charming atmosphere of the institution. At the left is the entrance to the executive offices of the Eastman School of Music.



Another view of the stage of Kilbourn Hall. This hall, an adjunct of the Eastman School of Music, was designed essentially for recital purposes, but has a complete motion picture equipment. The organ in this hall represents an investment of \$90,000.

"The Most Beautiful Theater."



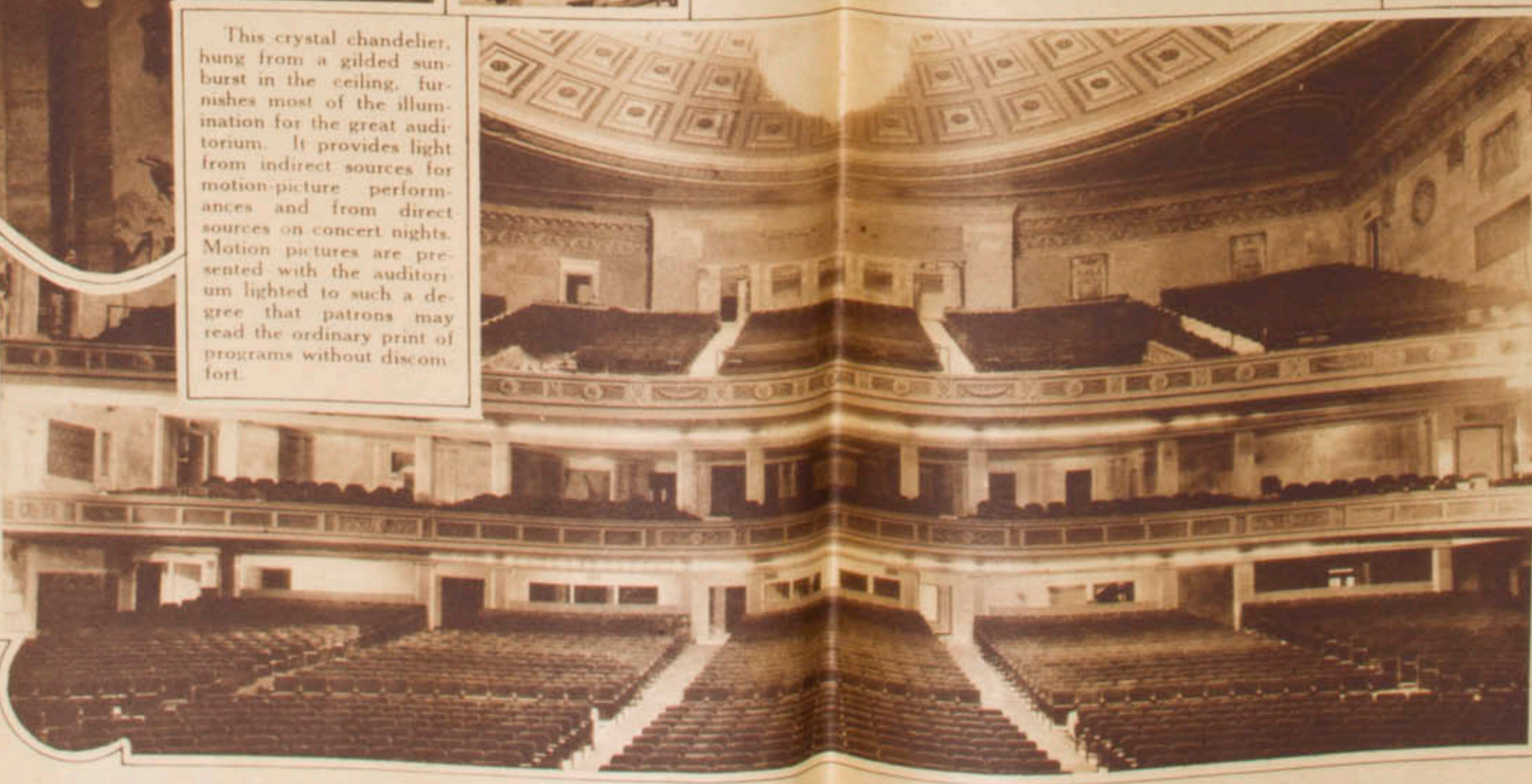
For architectural beauty, wealth of art treasures and completeness of equipment and accommodations, the Eastman Theater is unsurpassed. Above is a view of three murals on the south wall, the work of Barry Faulkner. They are descriptive of Sacred Music and the Music of Hunters and Shepherds. Four panels on the north wall, depicting Festival, Lyric, Martial and Romantic music, were painted by Ezra Winter.



A glimpse of the mezzanine and main floors. Seats are equally roomy and comfortable throughout the house, and the music and pictures may be enjoyed with equal pleasure from every seat.

Looking into the auditorium, which seats 3,358, from the stage. There are no posts to interfere with the view and the acoustic properties are perfect. Music for motion pictures is furnished by a full symphony orchestra and an eight-division organ with more than ten thousand speaking pipes, the most complete ever installed in a theater.

This crystal chandelier, hung from a gilded sunburst in the ceiling, furnishes most of the illumination for the great auditorium. It provides light from indirect sources for motion-picture performances and from direct sources on concert nights. Motion pictures are presented with the auditorium lighted to such a degree that patrons may read the ordinary print of programs without discomfort.



Bust of Beethoven, modeled in plaster by Leo Friedlander, American sculptor. This bust and a bust of Bach, double life size, are in circular niches in the walls on either side of the stage.

ERECTED MDCCLXXII
FOR THE ENRICHMENT
OF COMMUNITY LIFE

EASTMAN THEATER

EASTMAN THEATER AND
EASTMAN SCHOOL OF MUSIC

❖ "For the Enrichment
of Community Life." ❖

ROCHESTER, N. Y.



THE EASTMAN SCHOOL OF MUSIC is undoubtedly the finest of its kind in existence.

THE WEBER GRAND DUO-ART REPRODUCING PIANO was purchased and is now installed not only as part of the equipment but one of the faculty.

Probably the most convincing proof of the unapproached and unquestioned artistic position in the musical world that has been accorded The Duo-Art Reproducing Piano is illustrated by the three great schools of music purchasing and installing THE DUO-ART:

The Paris Conservatoire of Music,
The Royal Academy of London—and now
The Eastman School of Music.

We are indeed proud to have been associated, if even in a small way, with this magnificent manifestation of Mr. Eastman's high ideals which means so much to Rochester.

BALCOM MUSIC CO.

A. H. WARREN, Manager 38 and 40 East Avenue



"The Duo-Art is without question greatly superior to any other instrument of its kind and I am glad indeed to have my playing reproduced with such manifest fidelity."

(Signed)
IGNACE PADEREWSKI.



SALES and SERVICE
W.H. ROWERDINK & SON

The Service Station
W.H. Rowerdink & Son
30 North St.
For the application, adjustment and service on Cochet, Saubert, Stinson, Carburetors, Dikes, Dumpers, Folbert's Cleaners, Fitchese Truck Tires, Valves Springs, etc.
Occupies approximately 7000 sq. ft.

Holtzer-Cabot

THE Electrical Fire Alarm and the Low Tension Signal Systems of The Eastman Theater were designed especially for this important service. Holtzer-Cabot Electrical Systems are world-famous. Information and descriptive booklet will be sent, post free, upon request. Write Department C.

The Holtzer-Cabot Electric Co.
Boston, Mass.

The MALLY Co
53-55 East Avenue



You Can Get the Height of Style at Mally's in Dresses at 39.75

The two Dresses photographed from life, are good examples.

Dress on left is of Canton Crepe with the new circular skirt, \$39.75.

Dress on right is of Jacquard Crepe, new style sleeves and drape, \$39.75.

OTHER FALL DRESSES
25.00 to 97.50

Wards



Sport Scarf and Hat

ONLY \$8.95

SILVER and WHITE,
TAN and COPEN,
BUFF and SEAL,
BURNT ORANGE

Wards

25-29-31 Clinton Ave. South

YOU will find every advertiser in this section a progressive merchant and worthy of your patronage.



LEVENSON'S
Permanent Wave Process

Guaranteed not to break or injure the hair.
EXPERT COMB WATER WAVING
on Permanently Waved Bobbed Hair as well as Long Hair.
257 EAST MAIN ST.
Opp. Sibley's—Phone Main 4016



Women

without exception credit us with improving their personal appearance even to the point of seemingly reducing their age, when we arrange the coiffure with the aid of one of our own make, although inexpensive, switches, pompadours, transformations or other pieces. Our facilities for making any and every kind of hair piece are not excelled, neither do we admit that our ability to match the hair and please every patron is second to any.

Glara Palmer Oliver
HAIR STORE
45 CLINTON AVE. N.

DO YOU realize the value of the advertisements as news items? They help you determine just what you should buy and which merchant you should patronize.



Like Fairy Hands

Transforming many time-worn garments to smartness, style-fulness and newness.

A magic wand is not used. Simply most modern methods applied by workpeople who, thru long and varied experience, are masters of the cleaning art.

RAPP'S

DOMINANT DYERS and CLEANERS
58 Clinton North
Rapid Auto Service.

Cleanphones, Main 3249 or 3250.



This picture shows two large Steinway Grands in the office and studio of Mr. Alfred Klingenberg, Musical Director of the Eastman School of Music.

Buy a Steinway

On Beginning a Musical Education

Musicians and the musical public have long regarded the Steinway as the standard of perfection. They realize the materials which go into a Steinway are available to the whole world, but the genius which transmutes them into Steinway tone begins and ends with Steinway.

Is it any wonder, then, this piano was chosen by Mr. Eastman for the pianists, composers, violinists, singers, orchestra conductors and piano teachers of the Eastman School of Music?

Much as this means to every pianist, it has a special

significance for parents whose children are beginning a musical education. Not only does the Steinway cultivate the tone perception in a way that no other piano can, but it also encourages practice and aids advancement by reason of its easy, light, surprisingly agreeable action.

It is significant that the Steinway is the chosen piano for the Eastman School of Music, and it can be truthfully said and verified that the Eastman School of Music is provided with, by far, the finest pianos of any school in the world to-day.

The largest order ever given for Steinway Pianos in the world was given to J. W. Martin & Bro. for the Eastman School of Music. No other school in the world is equipped with as many fine pianos as the Eastman School. Every studio is provided with a Steinway.

Although it is universally conceded that the Steinway is the finest piano, it is worthy of note that it is not the most expensive piano. For it is the Steinway ideal to enable the music lover to own the best piano that can be made, to own it at the lowest cost possible, and on the easiest terms possible. All other makes taken in exchange at their full value.

Prices: \$875 and Up

J. W. MARTIN & BRO.

Founded 1861. Sole representative for the Steinway.
73 State St., Martin Block

G. CLAY COX, Mgr.



Art promenade between Eastman Theater and School of Music. To be open to attendants at weekly concerts in theater.

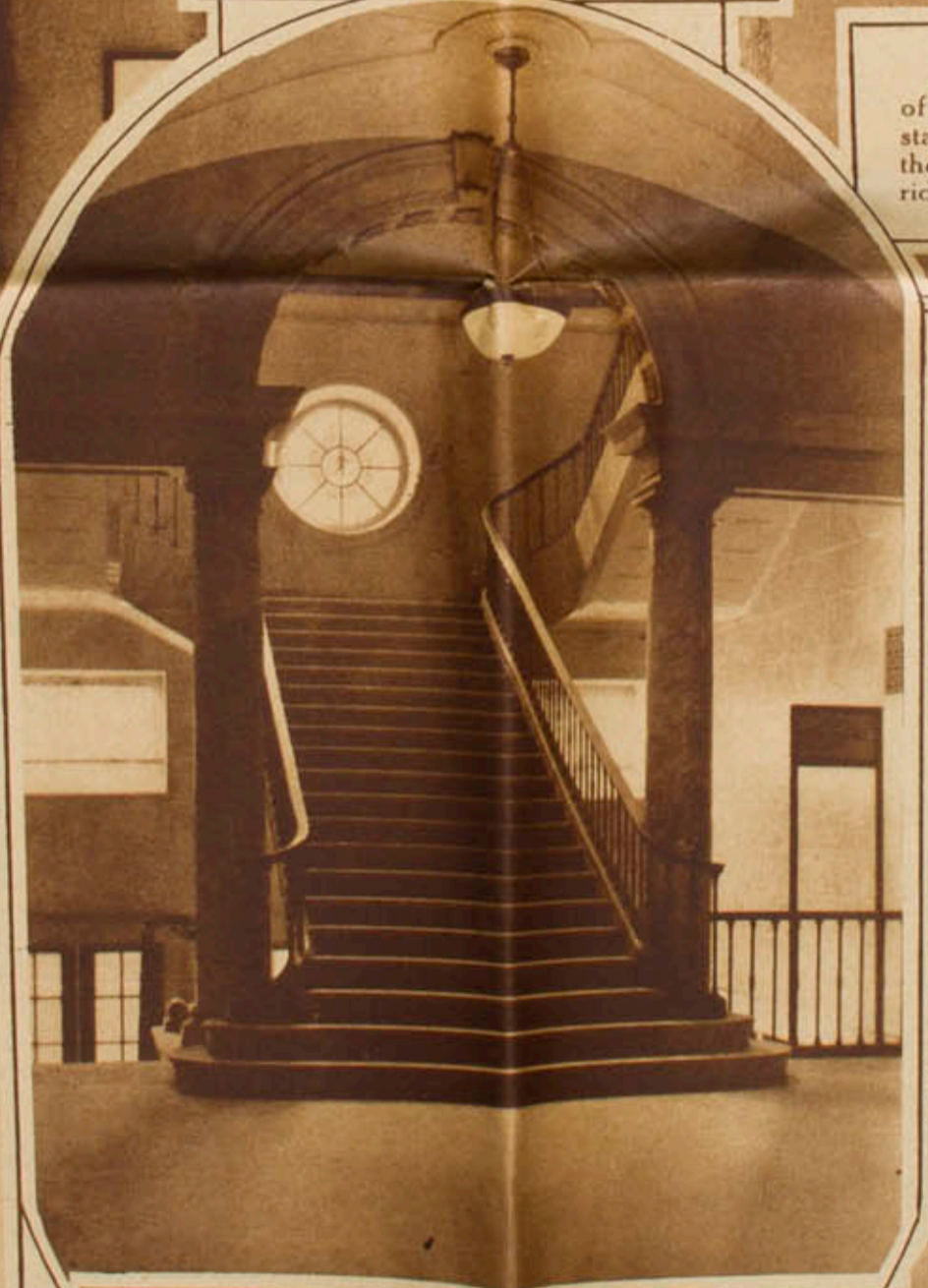


A side view of the grand staircase from the lower corridor.

Grand Staircase and Art Promenade.



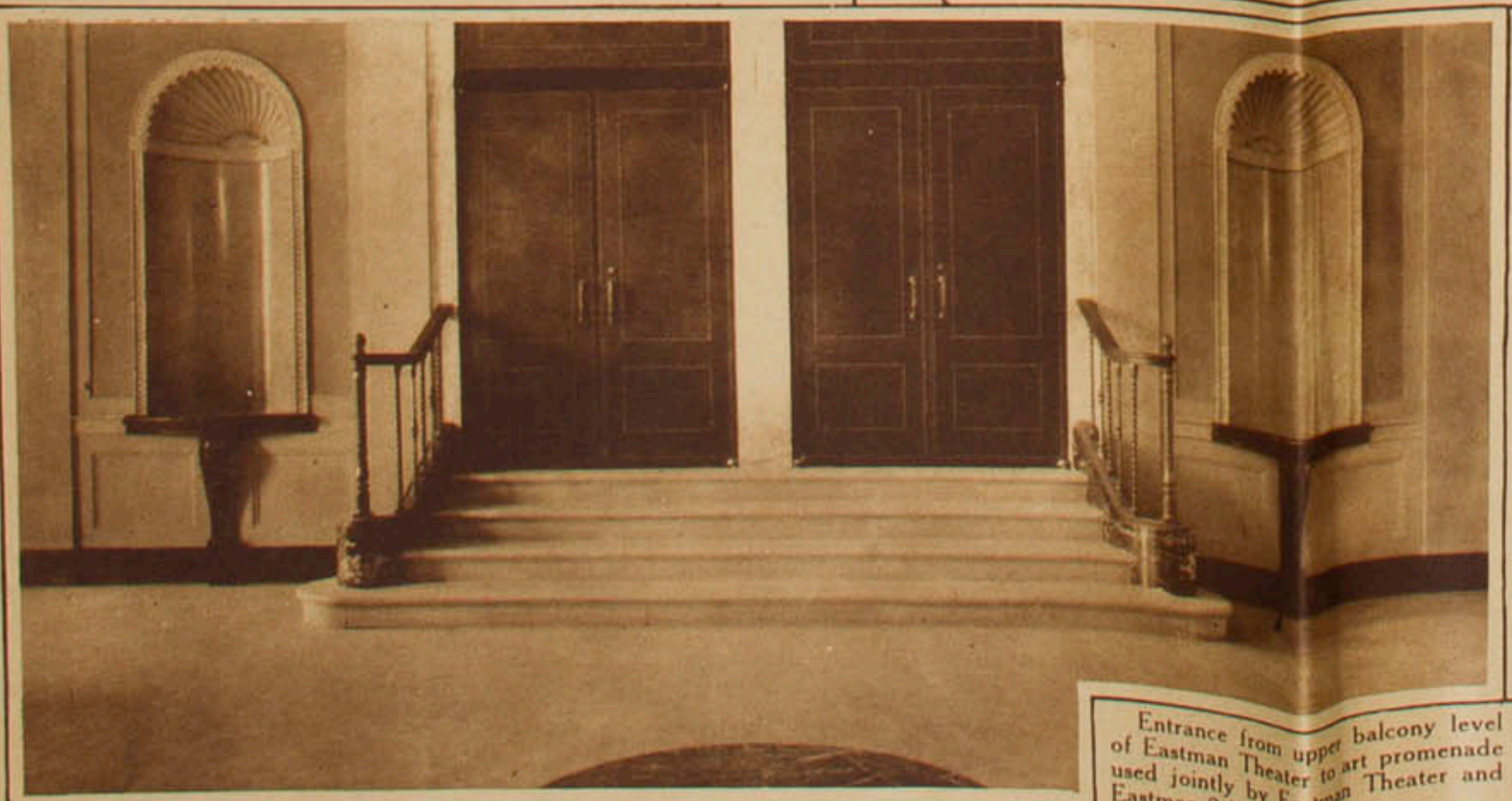
A typical corner of the art promenade, which is twenty-five feet wide and extends from Gibbs street to Swan street.



Grand staircase from lower corridor, Eastman School of Music, to art promenade.



Grand staircase from lower corridor to art promenade, showing a glimpse of both levels.



Entrance from upper balcony level of Eastman Theater to art promenade used jointly by Eastman Theater and Eastman School of Music.

with
imp
anc
ingl
we
aid
thou
pom
othe
mak
hair
neith
abilit
pleas
any.

Clas

45



MUSIC

DRAMA



"Every human action gains in honor, in grace, in all true magnificence, by its regard to things that are to come"
RUSKIN

The following named firms and individuals participated in the construction and equipment of the new Eastman Theater and School of Music

AMERICAN CLAY AND CEMENT CORPORATION
 1175 East Main St., Rochester
 FACE BRICK, SAND LIME BRICK, METAL DOORS AND LIME

A. J. HEINZLE
 666 University Ave., Rochester
 PLUMBING AND GAS PIPING

PIKE STAINED GLASS STUDIO
 191 East Ave., Rochester
 WINDOWS, MAIN CORRIDOR

AUSTIN ORGAN COMPANY
 Hartford, Conn.
 ORGAN FOR THEATER

HUBBS & HASTINGS PAPER CO.
 319 West Main St., Rochester
 SANITARY PAPER SUPPLIES

ROCHESTER GERMICIDE COMPANY
 16 Dowling Place, Rochester
 PAPER TOWELING AND EQUIPMENT, AND LIQUID TOILET SOAP AND EQUIPMENT

JAMES C. BARRY COMPANY
 95 North St., Rochester
 MARBLE AND TILE WORK

HOWE & ROGERS CO.
 89 Clinton Ave. South, Rochester
 CARPETINGS

THE RICKER MFG. CO.
 239 North Water St., Rochester
 ELECTRIC LIFT AND CONTROL OF CONSOLE FOR THEATER ORGAN—ELECTRIC COAL CONVEYOR—ELECTRIC ASH LIFT

DETROIT STOKER COMPANY
 Detroit, Mich.
 STOKERS

HOWE & BASSETT CO., Inc.
 23-25 Stillson Street, Rochester
 PLUMBING, HEATING, VENTILATING, VACUUM CLEANING, POWER PLANT

SIBLEY, LINDSAY & CURR CO.
 Main Street East, Rochester
 FURNITURE AND SHADES

EBSARY FIREPROOFING AND BLOCK COMPANY
 171 Court Street, Rochester
 WALL PLASTER AND GYPSUM PARTITION BLOCKS

INTERNATIONAL TIME RECORDING CO., OF NEW YORK
 Endicott, N. Y.—30 E. Main St., Rochester
 ELECTRIC TIME SYSTEMS

SCRANTOM'S, INC.
 20 West Main Street, Rochester
 OFFICE FURNITURE

EDWARD F. CALDWELL & CO., Inc.
 36-38-40 West 15th St., New York City
 SPECIAL ELECTRIC FIXTURES

JOHNSON SERVICE COMPANY
 Milwaukee, Wis.
 AUTOMATIC HEAT REGULATION

STROMBERG-CARLSON TELEPHONE MFG. CO.
 1050 University Ave., Rochester
 INTERIOR COMMUNICATING TELEPHONE SYSTEM

THILLMAN P. J. FABRY
 48 North Water St., Rochester
 WOOD CARVING

KNOWLES & PECK, INC.
 80 Franklin St., Rochester
 ROOFING AND SHEET METAL WORK

WHEELER-GREEN ELECTRIC CO.
 29-31 St. Paul St., Rochester
 ELECTRICAL WORK

FAUCHER-MacMURRAY, Inc.
 310 Franklin St., Rochester
 ORNAMENTAL BRONZE AND IRON WORK FOR LOBBY TABLE—MAIN AUDITORIUM GRILLS

WM. J. MORREY, INC.
 42 Cortland St., Rochester
 HEAT AND VENT DUCTS AND SHEET METAL WORK

WHITMORE, RAUBER & VICINUS
 279 South Ave., Rochester
 CEMENT, WIRE LATH, CURBING AND PAVEMENT

GENESEE BRIDGE COMPANY
 666 Plymouth Ave., Rochester
 WIRELESS TOWER

MATHEWS & BOUCHER
 26 Exchange St., Rochester
 HARDWARE

WRIGHT & ALEXANDER CO.
 285 State St., Rochester
 SPRINKLERS

F. L. HEUGHES & CO.
 1029 Lyell Ave., Rochester
 STRUCTURAL STEEL

JOHN J. MORROW, INC.
 43 West 48th St., New York City
 WALL PANELS IN MAIN LOBBY AND WOMEN'S ROOM

YAWMAN & ERBE MFG. CO.
 424 St. Paul St., Rochester
 OFFICE FURNITURE AND FILING SYSTEMS

A. W. HOPEMAN & SONS CO.
 569 Lyell Ave., Rochester
 GENERAL CONTRACTORS

NORRISTONE STUDIOS
 107 Norris St., Rochester
 NORRISTONE CUT CAST GRANITE BASE COURSE—FOUNTAIN BOWL FOR INTERIOR—34 NORRISTONE VASES FOR INTERIOR

ZENITHERM COMPANY, INC.
 22 East 17th St., New York City
 ARTIFICIAL STONE WALLS IN KILBOURN HALL AND MAIN AUDITORIUM

HILGARTNER MARBLE COMPANY
 Baltimore, Md.
 FOREIGN MARBLES

NORDEN ELECTRIC SIGN CO.
 112 East 125th St., New York City
 ELECTRIC SIGN

ZIMMERLI BUSINESS FURNITURE CORPORATION
 128 South Ave., Rochester
 DESKS AND STEEL WARDROBES

